



Title:	42. Winter view to Birdlip Quarry from rural lane west of Cowley Wood	HFoV (°)	90	Visualisation type	1	View direction	West
Date, time:	21 November 2019, 12:52	Scale/ Enlargement factor	96% at A1	Projection	Cylindrical	Camera (lens)	Nikon D610, FFS (Nikon 50mm)



Title:	42. Summer view to Birdlip Quarry from rural lane west of Cowley Wood	HFoV (°)	90	Visualisation type	1	View direction	West
Date, time:	26 September 2019, 10:21	Scale/ Enlargement factor	96% at A1	Projection	Cylindrical	Camera (lens)	Nikon D610, FFS (Nikon 50mm)



ARUP

Issue	Date	Comment	By	Chkd	Appd
C01	2021-05-20	DCO Application Submission (May 2021)	HS	AK	JP

A3 - Stage Completed

A417 Missing Link Project
Figure 7.10 Photosheets and Visualisations. Sheet 83 of 92
 HE551505-ARP-ELS-X_XX_XXXX_X-VS-LE-000008



Winter baseline photograph



Operation year 1 winter photomontage

Title	42. Summer view to Birdlip Quarry from rural lane west of Cowley Wood	HFoV (°)	90	Visualisation type	4	Camera (lens)	Sony A7rIV, FFS (35mm)
Date, time	4 February 2020, 12:54	Scale/ Enlargement factor	96% at A1	Projection	Cylindrical	Height of camera lens	1.6m
Coordinates	SO 95127 13405 263m AOD	Distance from site boundary	0m	View direction	260° from N		
To be viewed at comfortable arms length							



ARUP

Issue	Date	Comment	By	Chkd	Appd
C01	2021-05-20	DCO Application Submission (May 2021)	HS	AK	JP

A3 - Stage Completed

A417 Missing Link Project
Figure 7.10 Photosheets and Visualisations. Sheet 84 of 92
 HE551505-ARP-ELS-X_XX_XXXX_X-VS-LE-000008



Winter baseline photograph



Operation year 15 winter photomontage

Title	42. Summer view to Birdlip Quarry from rural lane west of Cowley Wood	HFoV (°)	90	Visualisation type	4	Camera (lens)	Sony A7rIV, FFS (35mm)
Date, time	4 February 2020, 12:54	Scale/ Enlargement factor	96% at A1	Projection	Cylindrical	Height of camera lens	1.6m
Coordinates	SO 95127 13405 263m AOD	Distance from site boundary	0m	View direction	260° from N		
To be viewed at comfortable arms length							

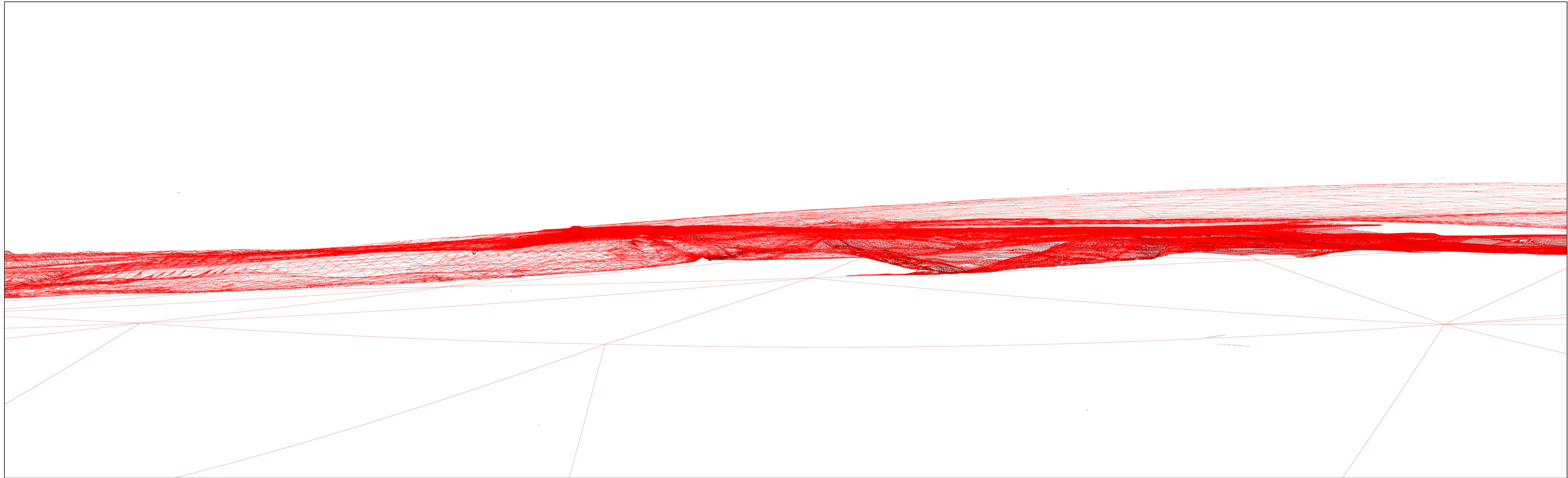


ARUP

Issue	Date	Comment	By	Chkd	Appd
C01	2021-05-20	DCO Application Submission (May 2021)	HS	AK	JP

A3 - Stage Completed

A417 Missing Link Project
Figure 7.10 Photosheets and Visualisations. Sheet 85 of 92
 HE551505-ARP-ELS-X_XX_XXXX_X-VS-LE-000008



Wireline



Composite image



NOTE: Tripod location photo of verifiable photography not available from surveyor. The photo shown is of the tripod location for baseline winter photography taken by the landscape architect, which was taken from the same position as the verifiable view.

Tripod location

Title	42. Summer view to Birdlip Quarry from rural lane west of Cowley Wood	HFoV (°)	90	Visualisation type	4	Camera (lens)	Sony A7rIV, FFS (35mm)
Date, time	4 February 2020, 12:54	Scale/ Enlargement factor	96% at A1	Projection	Cylindrical	Height of camera lens	1.6m
Coordinates	SO 95127 13405 263m AOD	Distance from site boundary	0m	View direction	260° from N		

To be viewed at comfortable arms length



ARUP

Issue	Date	Comment	By	Chkd	Appd
C01	2021-02-20	DCO Application Submission (May 2021)	HS	AK	JP

A3 - Stage Completed

A417 Missing Link Project
Figure 7.10 Photosheets and Visualisations. Sheet 86 of 92
 HE551505-ARP-ELS-X_XX_XXXX_X-VS-LE-000008



Title:	42a. Winter view of rural lane west of Cowley Wood - alternative to 42	HFoV (°)	90	Visualisation type	1	View direction	West
Date, time:	11 March 2020, 14:46	Scale/ Enlargement factor	96% at A1	Projection	Cylindrical	Camera (lens)	Nikon D610, FFS (Nikon 50mm)



Title:	42a. Summer view of rural lane west of Cowley Wood - alternative to 42	HFoV (°)	90	Visualisation type	1	View direction	West
Date, time:	26 September 2019, 10:35	Scale/ Enlargement factor	96% at A1	Projection	Cylindrical	Camera (lens)	Nikon D610, FFS (Nikon 50mm)



ARUP

Issue	Date	Comment	By	Chkd	Appd
C01	2021-05-20	DCO Application Submission (May 2021)	HS	AK	JP

A3 - Stage Completed



Title:	43. Winter view along north edge of Brimpsfield towards Cowley Wood	HFoV (°)	90	Visualisation type	1	View direction	North East
Date, time:	25 February 2020, 14:07	Scale/ Enlargement factor	96% at A1	Projection	Cylindrical	Camera (lens)	Nikon D610, FFS (Nikon 50mm)



Title:	43. Summer view along north edge of Brimpsfield towards Cowley Wood	HFoV (°)	90	Visualisation type	1	View direction	North East
Date, time:	26 September 2019, 12:04	Scale/ Enlargement factor	96% at A1	Projection	Cylindrical	Camera (lens)	Nikon D610, FFS (Nikon 50mm)



ARUP

Issue	Date	Comment	By	Chkd	Appd
C01	2021-05-20	DCO Application Submission (May 2021)	HS	AK	JP

A3 - Stage Completed



Title:	44. Winter view to A417 from north of Brimpsfield	HFoV (°)	90	Visualisation type	1	View direction	North
Date, time:	25 February 2020, 14:12	Scale/ Enlargement factor	96% at A1	Projection	Cylindrical	Camera (lens)	Nikon D610, FFS (Nikon 50mm)



Title:	44. Summer view to A417 from north of Brimpsfield	HFoV (°)	90	Visualisation type	1	View direction	North
Date, time:	26 September 2019, 11:52	Scale/ Enlargement factor	96% at A1	Projection	Cylindrical	Camera (lens)	Nikon D610, FFS (Nikon 50mm)



ARUP

Issue	Date	Comment	By	Chkd	Appd
C01	2021-05-20	DCO Application Submission (May 2021)	HS	AK	JP

A3 - Stage Completed



Title:	45. Winter view to A417 from Black-lands Farm	HFoV (°)	90	Visualisation type	1	View direction	North East
Date, time:	25 February 2020, 13:50	Scale/ Enlargement factor	96% at A1	Projection	Cylindrical	Camera (lens)	Nikon D610, FFS (Nikon 50mm)



Title:	45. Summer view to A417 from Black-lands Farm	HFoV (°)	90	Visualisation type	1	View direction	North East
Date, time:	26 September 2019, 12:31	Scale/ Enlargement factor	96% at A1	Projection	Cylindrical	Camera (lens)	Nikon D610, FFS (Nikon 50mm)



ARUP

Issue	Date	Comment	By	Chkd	Appd
C01	2021-05-20	DCO Application Submission (May 2021)	HS	AK	JP

A3 - Stage Completed

A417 Missing Link Project
Figure 7.10 Photosheets and Visualisations. Sheet 90 of 92
 HE551505-ARP-ELS-X_XX_XXXX_X-VS-LE-000008



Title:	46. Winter view to Highgate Farm from A417	HFoV (°)	90	Visualisation type	1	View direction	North West
Date, time:	11 March 2020, 15:09	Scale/ Enlargement factor	96% at A1	Projection	Cylindrical	Camera (lens)	Nikon D610, FFS (Nikon 50mm)



Title:	46. Summer view to Highgate Farm from A417	HFoV (°)	90	Visualisation type	1	View direction	North West
Date, time:	26 September 2019, 10:55	Scale/ Enlargement factor	96% at A1	Projection	Cylindrical	Camera (lens)	Nikon D610, FFS (Nikon 50mm)



Issue	Date	Comment	By	Chkd	Appd
C01	2021-05-20	DCO Application Submission (May 2021)	HS	AK	JP

A3 - Stage Completed

A417 Missing Link Project
Figure 7.10 Photosheets and Visualisations. Sheet 91 of 92
 HE551505-ARP-ELS-X_XX_XXXX_X-VS-LE-000008



Title:	47. Summer view towards Air Balloon roundabout from National Star College	HFoV (°)	90	Visualisation type	1	View direction	South West
Date, time:	22 September 2020, 13:56	Scale/ Enlargement factor	96% at A1	Projection	Cylindrical	Camera (lens)	Nikon D610, FFS (Nikon 50mm)

